

COVID19 in Gloucestershire – weekly data summary Week 39 (reported week 38)

The report is based on data between 27th September – 3rd October 2021 and where available daily, data up to 6th October 2021

Gloucestershire Local Outbreak Management
PREVENT-CONTAIN-RESPOND-**MONITOR**



Infections

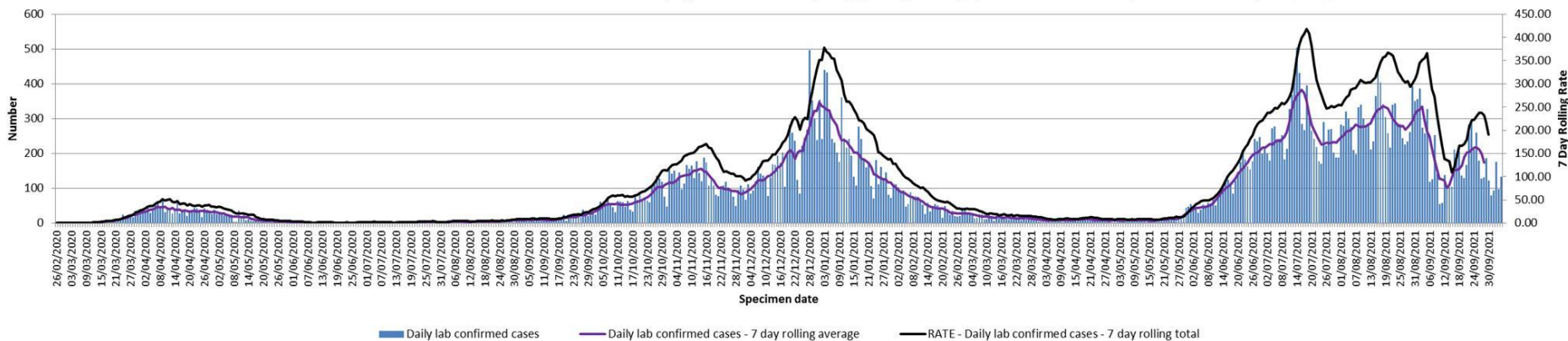
Daily confirmed cases - Gloucestershire

Source: <https://coronavirus.data.gov.uk/> (* likely to change)

Includes Pillar 1 and 2.

Pillar 1: Testing within hospital setting and healthcare workers

Pillar 2: Wider government led community testing through commercial laboratories



Specimen day	Week 40 (Monday 4th October- Sunday 10th October)	Week 39 (Monday 27th September- Sunday 3rd October)	Week 38 (Monday 20th September- Sunday 26th September)	Week 37 (Monday 13th September- Sunday 19th September)
Monday	176*	180	136	138
Tuesday	97*	127	129	103
Wednesday	132*	131	167	102
Thursday	Awaiting data	187**	282	104
Friday	N/A	123	294	212
Saturday	N/A	80*	211**	201
Sunday	N/A	94*	259	206
Weekly running total	405*	922**	1478**	1066

Source: <https://coronavirus.data.gov.uk/> / Includes Pillar 1 and 2:

Pillar 1: Testing within hospital setting and healthcare workers

Pillar 2: Wider government led community testing through commercial laboratories

***subject to change**

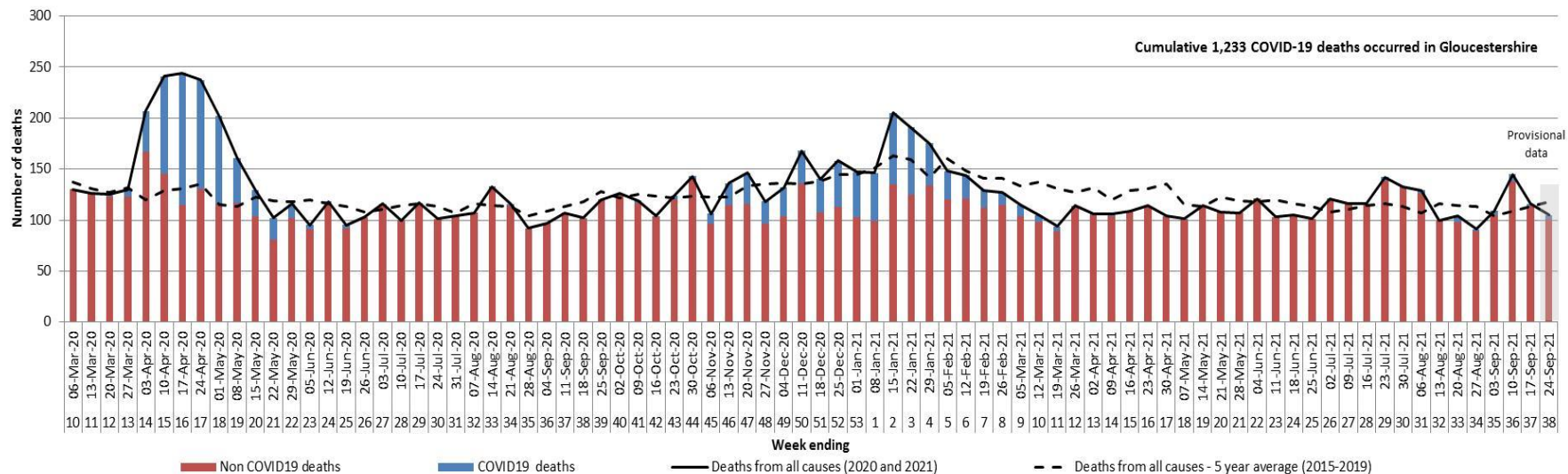


How are test numbers measured?

Lab-confirmed positive cases are attributed to the day the first specimen was taken from the person being tested (the specimen date). Each day new cases are reported, but the dates they originate from cover the previous few days. Because of this, there are few cases reported for the most recent dates. Data from around 5 days ago can usually be considered complete. Data for recent days are constantly being revised as more information becomes available.

Mortality

Weekly deaths occurring up to 24th September, compared with the five-year weekly average



Source: ONS and PCMD

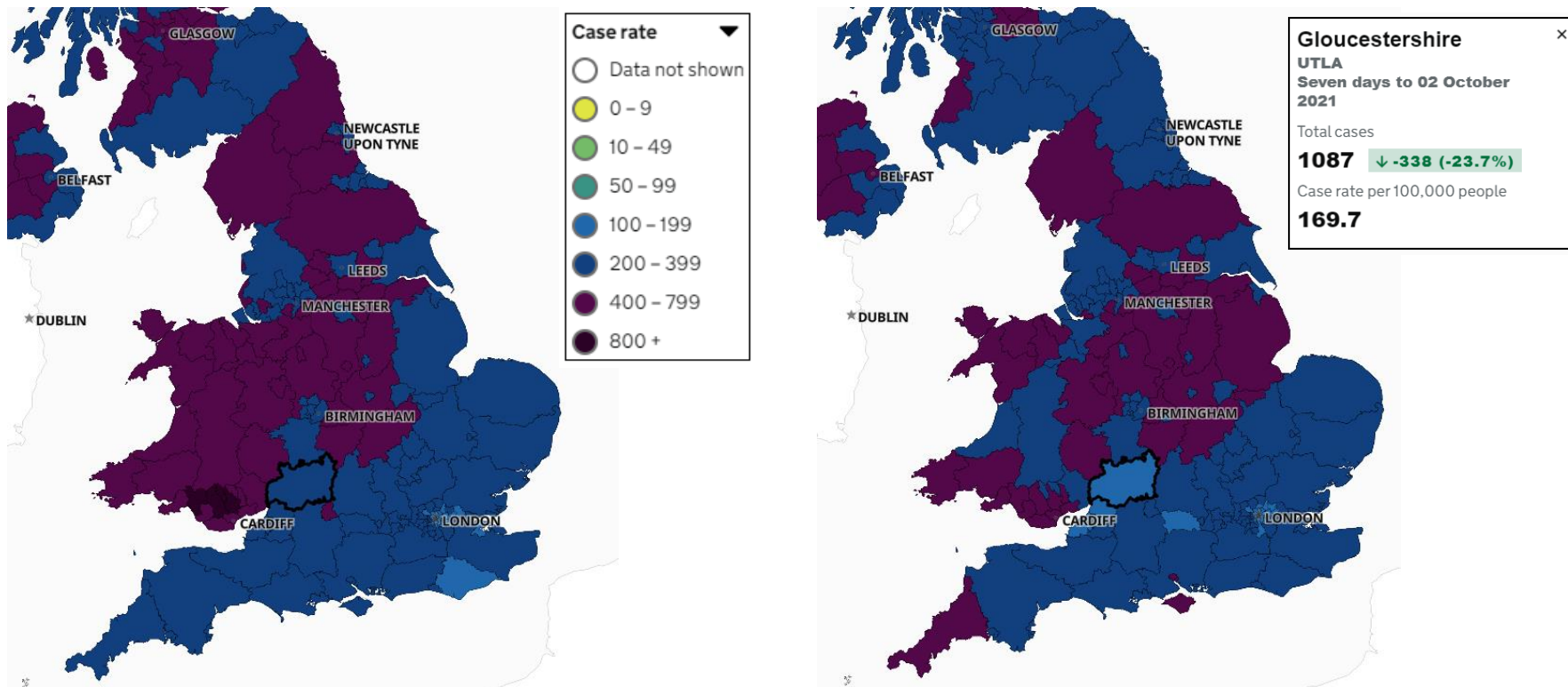
COVID19 deaths are all deaths where COVID19 features on the death certificate. It is not known to what extent it contributed to an individual's death.

Weekly death figures provide provisional counts of the number of deaths registered in England and Wales for which data are available. From 31st March 2020 these figures also show the number of deaths involving coronavirus (COVID-19), based on **any** mention of COVID-19 on the death certificate.



UK Medium Super Output Area (MSOA)

- Medium Super Output Areas (MSOA*) are a small area statistical geography with an average 8,447 population and average of 3,395 households. This map of UK MSOA shows Gloucestershire cases have decreased from the 25th September (on the left) to the 2nd October (on the right).



Source: Public Health England Second Generation Surveillance System (SGSS). Data includes lab confirmed pillar 1 & 2 positive cases of Coronavirus (COVID-19). <https://coronavirus-staging.data.gov.uk/details/interactive-map> Please note: Seven day rates are expressed per 100,000 population and are calculated by dividing the seven day count by the area population and multiplying by 100,000. Small area analysis can uncover issues or disparities in health service access or outcomes, which you might not see at a larger geography. However, because areas contain relatively small numbers of individuals, and events, the observed rates may differ from the expected due to chance alone. Also, there may be differences in the characteristics of the populations between small areas that are the cause of the difference.

R Number and Growth Rate 1st October 2021

The Latest R Value in England

0.8 to 1.1

The Latest R Value in South West

0.8 to 1.1

Growth Rate % Per Day in South West

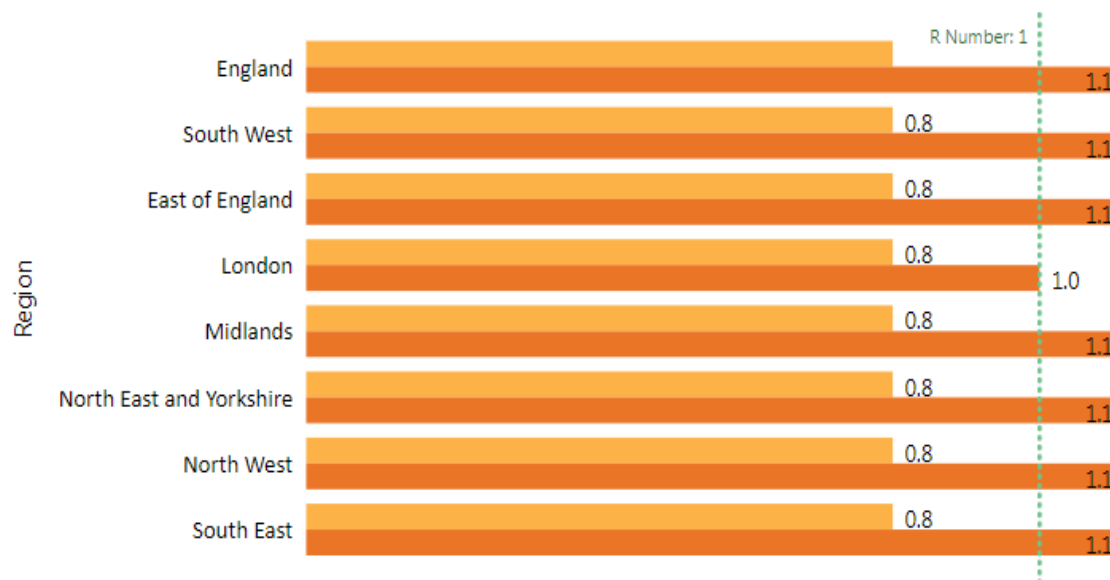
-3 to +1

An R number between 1.3 and 1.5 means that on average every 10 people infected will infect between 13 and 15 other people. The UK estimates of R and growth rate are averages over very different epidemiological situations and should be regarded as a guide to the general trend rather than a description of the epidemic state. Source: <https://www.gov.uk/guidance/the-r-number-in-the-uk>

The R range for England is 0.8 to 1.1 and the growth rate range for England is -3% to +1% per day as of 1 October 2021.

Latest R Number by Region - Shown as a Range with Upper and Lower Estimates

● Lower R Value ● Upper R Value



Trend in R Number over time - England only

● Lower R ● Upper R

