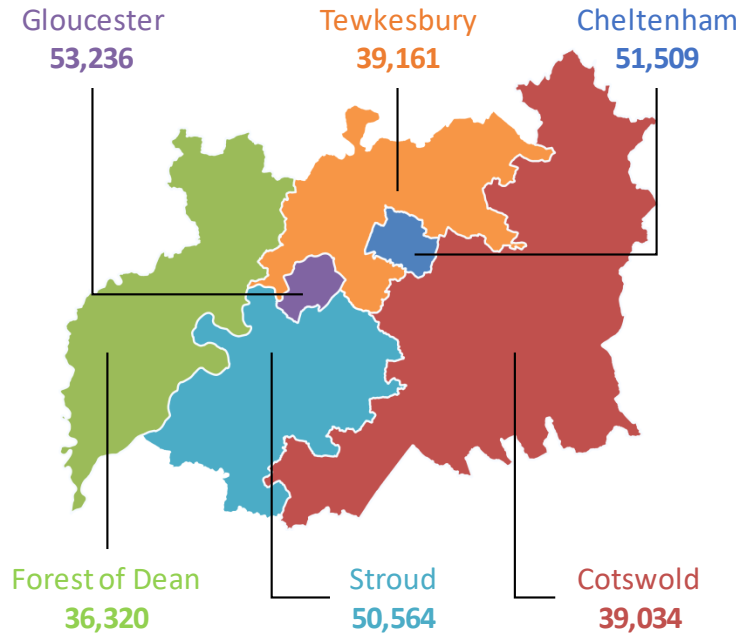


Household Projections 2018 – 2043

Projected Year:
2018

Number of Households 2018

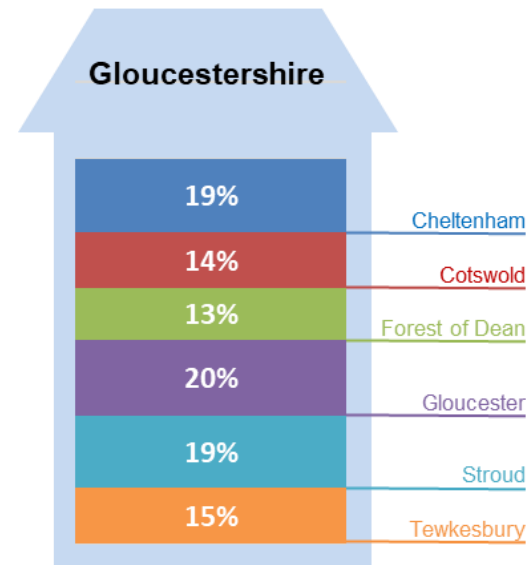
The 2018-based projections suggest that Gloucestershire has **269,824** households.



In 2018, **Gloucester City** has the highest number of households of all districts, at **53,236**.

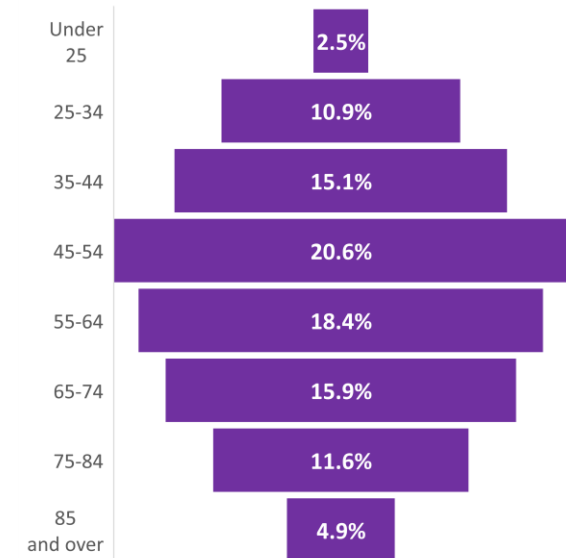
Percentage of Households 2018

In 2018, around one **fifth** of households are in **Gloucester City, Cheltenham Borough,** and **Stroud District** respectively.



Percentage of Heads of Households by Age 2018

In 2018, the highest proportion of Gloucestershire households (**20.6%**) are headed by someone aged **45-54** years old.

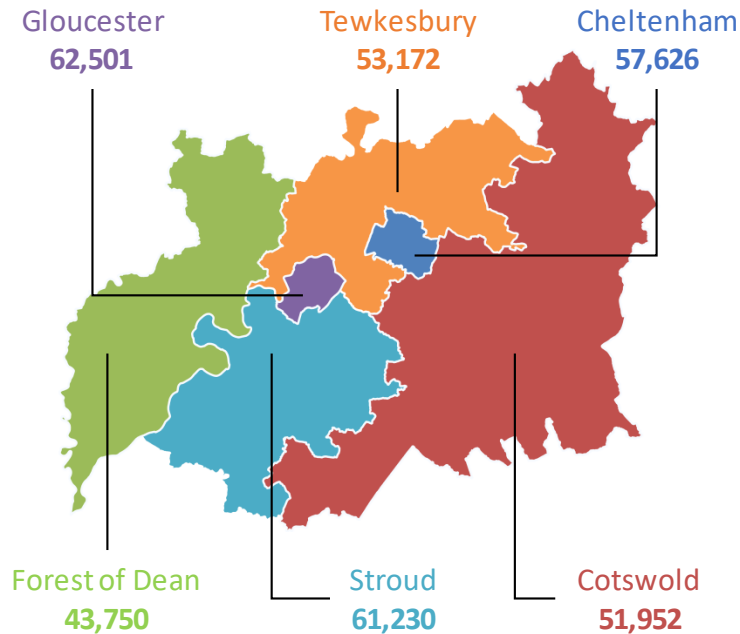


Household Projections 2018 – 2043

Projected Year:
2043

Number of Households 2043

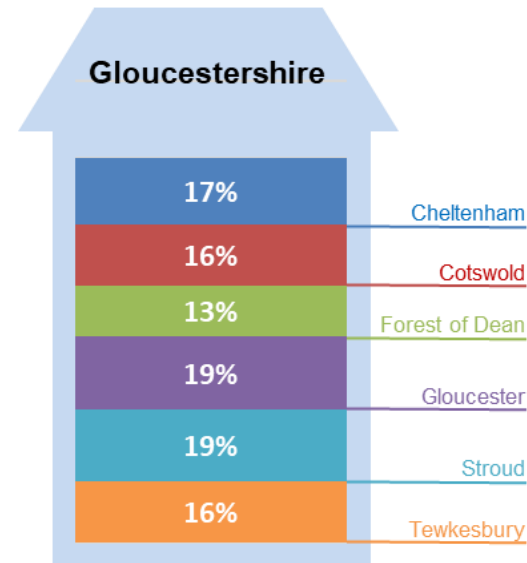
By 2043, Gloucestershire is projected to have **330,231** households.



By 2043, **Gloucester City** is projected to still have the highest number of households of all districts, at **62,501**.

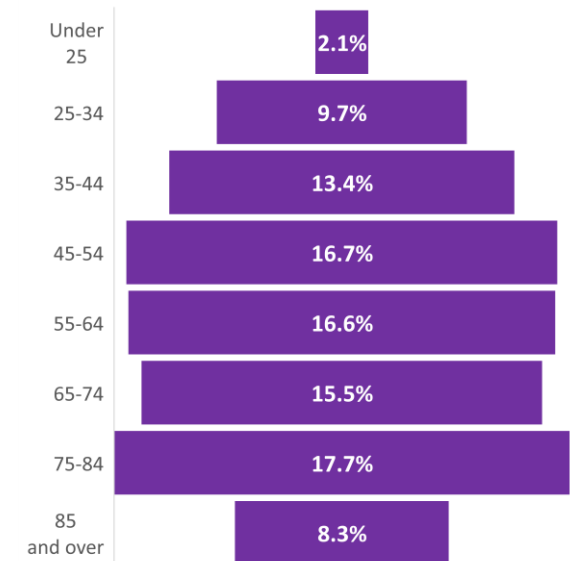
Percentage of Households 2043

By 2043, almost one **fifth** of households are projected to be in **Gloucester City**, and **Stroud District** respectively.



Percentage of Heads of Households by Age 2043

By 2043, the highest proportion of Gloucestershire households (**17.7%**) is projected to be headed by someone aged **75-84** years old.

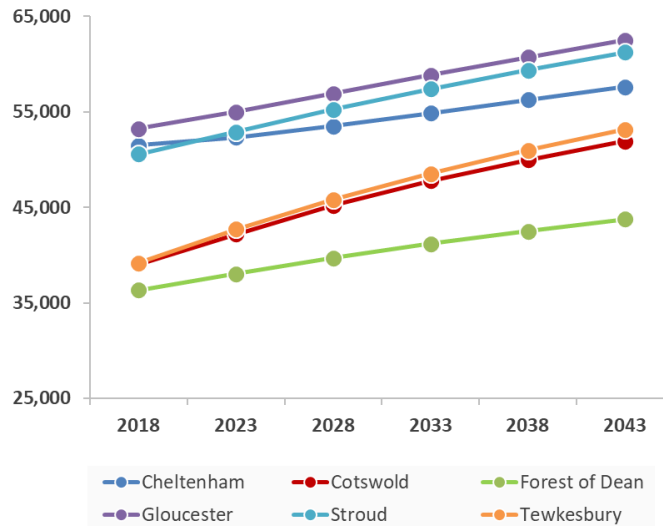


Household Projections 2018 – 2043

Projected Years:
2018-2043

Projected Number of Households 2018 to 2043

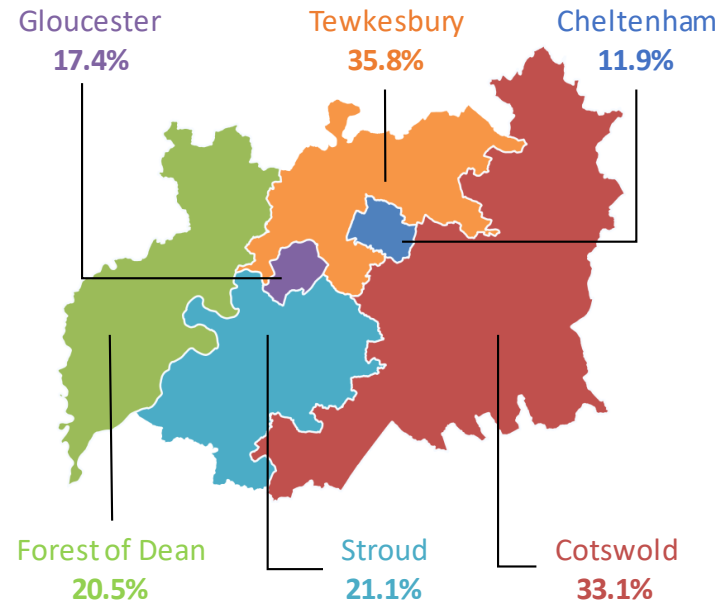
Tewkesbury Borough is projected to have the highest household growth (**14,011 households**) of all six districts over the next 25 years.



Gloucestershire is projected to have **330,231 households** in total by 2043.

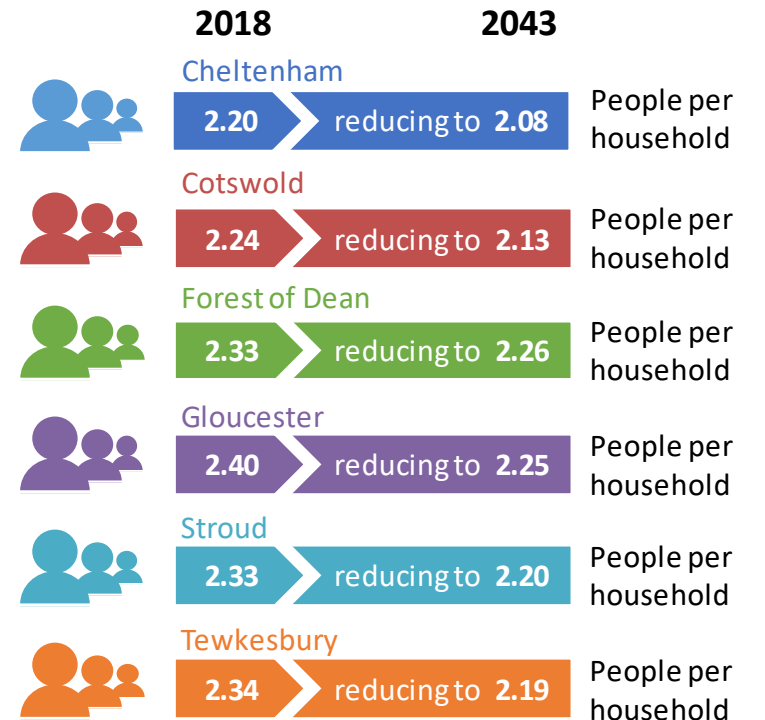
Projected Percentage Increase 2018 to 2043

Projections suggest that, between 2018 and 2043, the number of households will increase by...



It is estimated that the overall increase in households in **Gloucestershire** will be **60,407 (22.4%)**.

Average Household Size 2018 to 2043



It is estimated that the average household size in **Gloucestershire** is **2.31**, reducing to **2.19** in 2043.