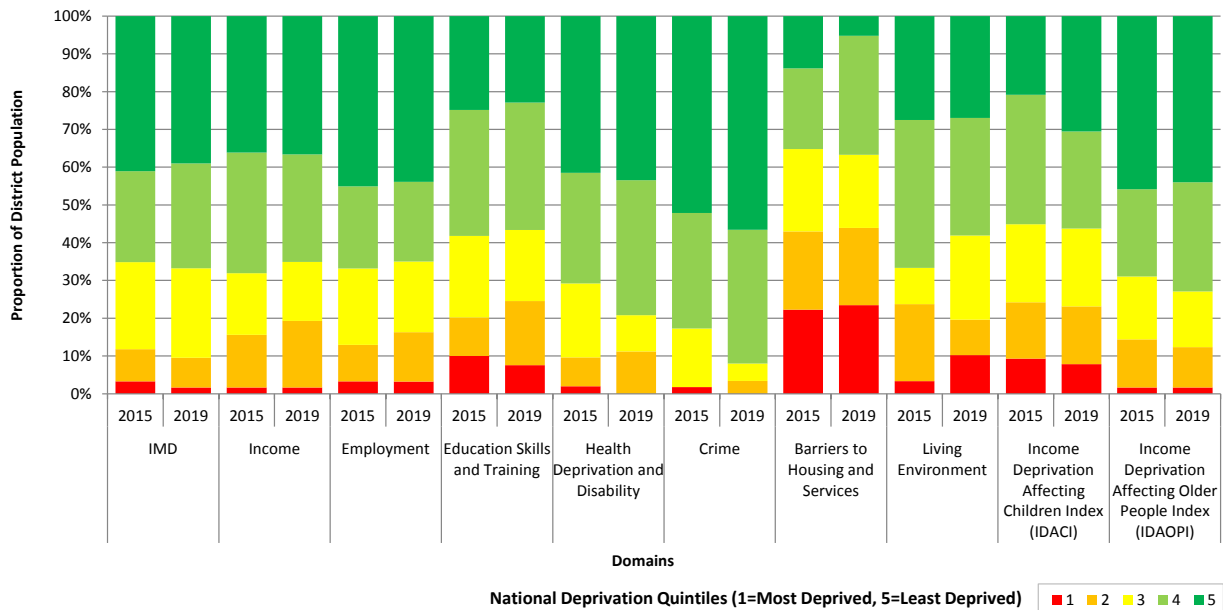


The English Indices of Deprivation 2019 Tewkesbury Borough Summary

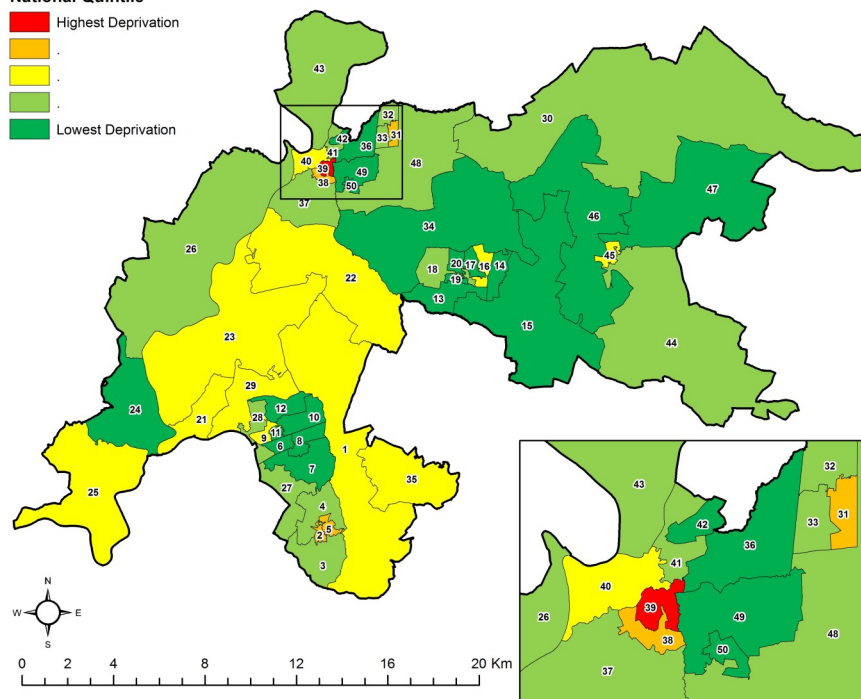
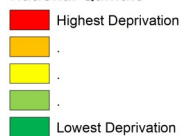
Tewkesbury is the **4th most deprived district/borough** in Gloucestershire and ranks as the **261st** most deprived of the 317 districts in England

Tewkesbury is home to the **second most deprived LSOA** in the county for “**Barriers to Housing and Services**” (Severn Vale North - which is the 270th most deprived LSOA of the 32,844 LSOAs in England)

Tewkesbury Indices of Deprivation Domains by National Quintile, 2019 compared with 2015



Index of Multiple Deprivation National Quintile



Map Key	LSOA NAME
1	BADGEWORTH
2	BROCKWORTH WEST 1
3	BROCKWORTH WEST 2
4	BROCKWORTH WEST 3
5	BROCKWORTH EAST
6	CHURCHDOWN ST JOHN'S 5
7	CHURCHDOWN BROOKFIELD WITH HUCCLECOTE 1
8	CHURCHDOWN BROOKFIELD WITH HUCCLECOTE 2
9	CHURCHDOWN ST JOHN'S 1
10	CHURCHDOWN ST JOHN'S 2
11	CHURCHDOWN ST JOHN'S 3
12	CHURCHDOWN ST JOHN'S 4
13	CLEEVE GRANGE 1
14	CLEEVE HILL 1
15	CLEEVE HILL 2
16	CLEEVE ST MICHAEL'S 1
17	CLEEVE ST MICHAEL'S 2
18	CLEEVE WEST 1
19	CLEEVE GRANGE 2
20	CLEEVE WEST 3
21	INNSWORTH 1
22	SEVERN VALE NORTH
23	SEVERN VALE SOUTH
24	HIGHNAM WITH HAW BRIDGE 1
25	HIGHNAM WITH HAW BRIDGE 2
26	HIGHNAM WITH HAW BRIDGE 3
27	CHURCHDOWN BROOKFIELD WITH HUCCLECOTE 3
28	INNSWORTH 2
29	INNSWORTH 3
30	ISBOURNE 1
31	NORTHWAY 1
32	NORTHWAY 2
33	NORTHWAY 3
34	CLEEVE HILL 3
35	SHURDINGTON
36	TEWKESBURY EAST 3
37	TEWKESBURY SOUTH 1
38	TEWKESBURY SOUTH 2
39	TEWKESBURY SOUTH 3
40	TEWKESBURY NORTH AND TWINNING 1
41	TEWKESBURY SOUTH 4
42	TEWKESBURY NORTH AND TWINNING 2
43	TEWKESBURY NORTH AND TWINNING 3
44	WINCHCOMBE 1
45	WINCHCOMBE 2
46	WINCHCOMBE 3
47	WINCHCOMBE 4
48	ISBOURNE 2
49	TEWKESBURY EAST 1
50	TEWKESBURY EAST 2