

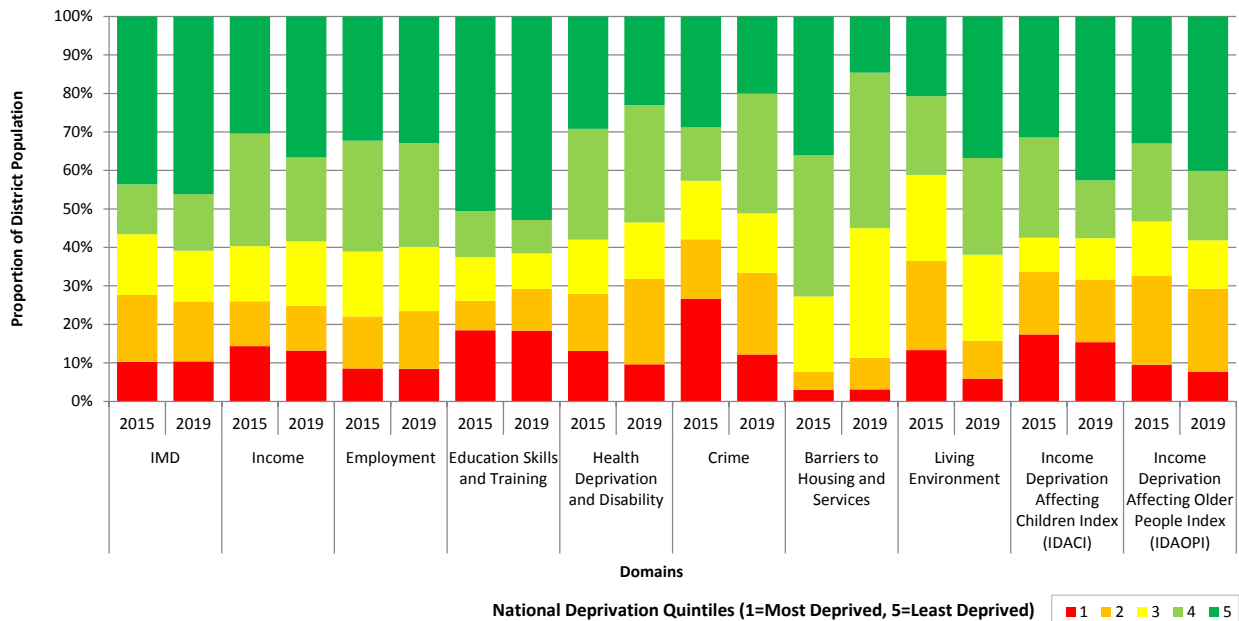
The English Indices of Deprivation 2019 Cheltenham Borough Summary

Cheltenham is the **3rd most deprived district/ borough** in Gloucestershire and ranks as the **237th** most deprived of the 317 districts in England

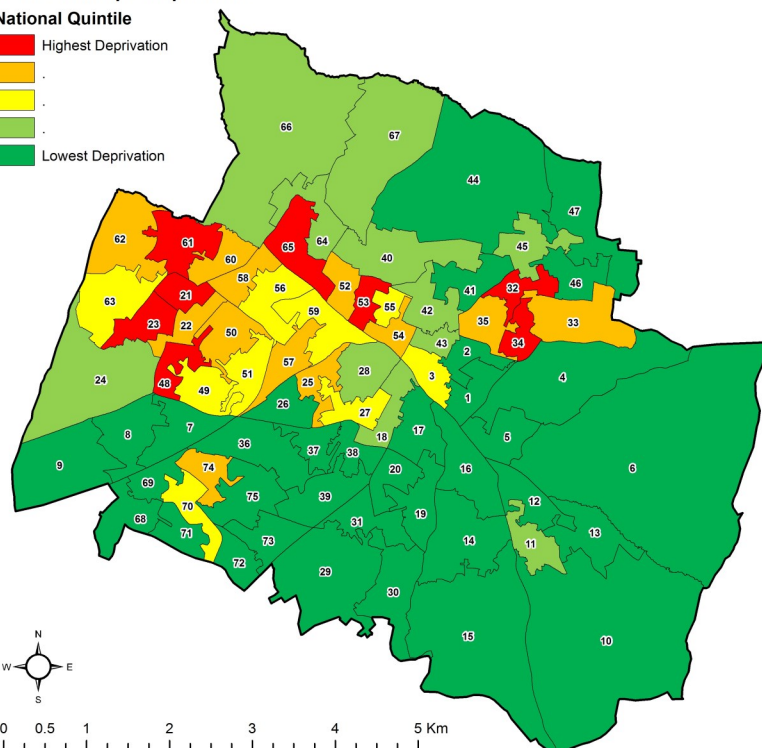
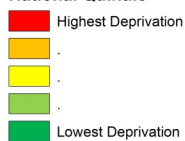
Cheltenham has the **greatest proportion of the population (46%)** in Gloucestershire living in the **least deprived 20%** of LSOAs in England

Cheltenham is home to the **second most deprived LSOAs** in the county for: **“Income Deprivation Affecting Older People Index (IDAPOI)”** (St Paul’s 2)

Cheltenham Indices of Deprivation Domains by National Quintile, 2019 compared with 2015



Index of Multiple Deprivation National Quintile



Map Key	LSOA NAME	Map Key	LSOA NAME
1	ALL SAINTS 1	39	PARK 4
2	ALL SAINTS 2	40	PITTVILLE 1
3	ALL SAINTS 3	41	PITTVILLE 2
4	BATTLEDOWN 1	42	PITTVILLE 3
5	BATTLEDOWN 2	43	PITTVILLE 4
6	BATTLEDOWN 3	44	PRESTBURY 1
7	BENHALL AND THE REDDINGS 1	45	PRESTBURY 2
8	BENHALL AND THE REDDINGS 2	46	PRESTBURY 3
9	BENHALL AND THE REDDINGS 3	47	PRESTBURY 4
10	CHARLTON KINGS 1	48	ST MARK'S 1
11	CHARLTON KINGS 2	49	ST MARK'S 2
12	CHARLTON KINGS 3	50	ST MARK'S 3
13	CHARLTON KINGS 4	51	ST MARK'S 4
14	CHARLTON PARK 1	52	ST PAUL'S 1
15	CHARLTON PARK 2	53	ST PAUL'S 2
16	CHARLTON PARK 3	54	ST PAUL'S 3
17	COLLEGE 1	55	ST PAUL'S 4
18	COLLEGE 2	56	ST PETERS 1
19	COLLEGE 3	57	ST PETERS 2
20	COLLEGE 4	58	ST PETERS 3
21	HESTERS WAY 1	59	ST PETERS 4
22	HESTERS WAY 2	60	SPRINGBANK 1
23	HESTERS WAY 3	61	SPRINGBANK 2
24	HESTERS WAY 4	62	SPRINGBANK 3
25	LANSDOWN 1	63	SPRINGBANK 4
26	LANSDOWN 2	64	SWINDON VILLAGE 1
27	LANSDOWN 3	65	SWINDON VILLAGE 2
28	LANSDOWN 4	66	SWINDON VILLAGE 3
29	LECKHAMPTON 1	67	SWINDON VILLAGE 4
30	LECKHAMPTON 2	68	UP HATHERLEY 1
31	LECKHAMPTON 3	69	UP HATHERLEY 2
32	OAKLEY 1	70	UP HATHERLEY 3
33	OAKLEY 2	71	UP HATHERLEY 4
34	OAKLEY 3	72	WARDEN HILL 1
35	OAKLEY 4	73	WARDEN HILL 2
36	PARK 1	74	WARDEN HILL 3
37	PARK 2	75	WARDEN HILL 4
38	PARK 3		